

SHOOTINGS  
FILMS  
FITTINGS  
CASTINGS  
EVENTS



NAU BOSTIK

# Do you need space to film your productions?

We offer you a 6,000 m2 artistic/industrial-style buildings in Barcelona.

This space is divided into 10 sets, each of them with specific characteristics that suit different needs (for instance, you can enter with the car in 1 set).

Also available:

Outer space for production and shooting.

Rooms for production.

Kitchen and catering spaces.

Two viewpoints with Barcelona's skyline.

Visit or call us to explain your needs.

## **FILMING/ SHOOTINGS**

[www.naubostik.com](http://www.naubostik.com)

[naubostikfilms@gmail.com](mailto:naubostikfilms@gmail.com)

+34 653 067 590 (Cristina)

## **EVENTS**

[www.naubostik.com](http://www.naubostik.com)

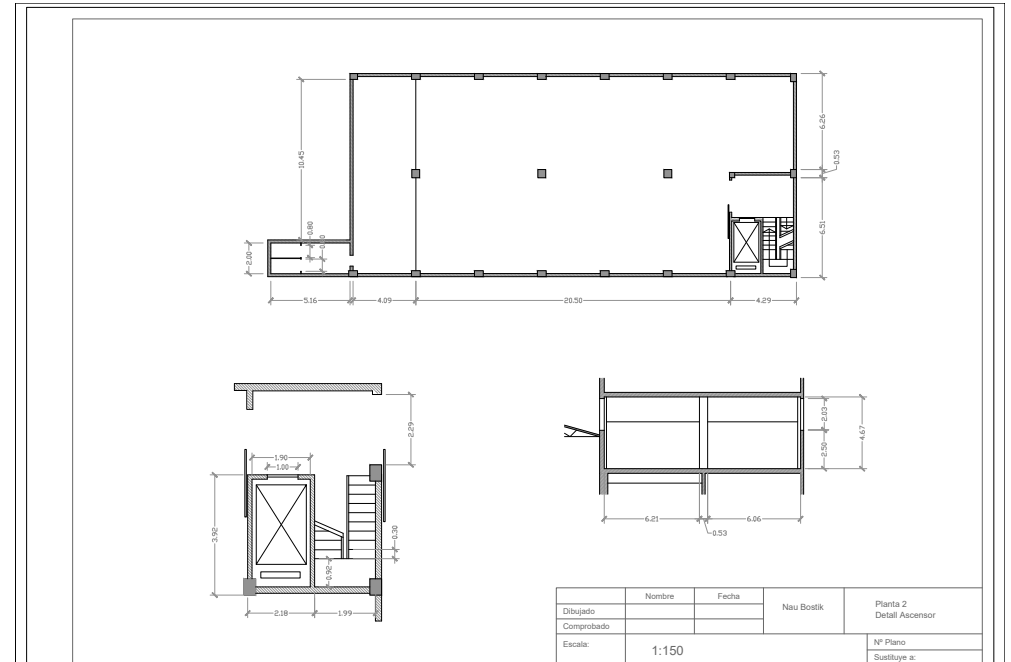
[naubostik@gmail.com](mailto:naubostik@gmail.com)

+34 616 058 413 (Paula) +34 667 755 347 (Jorge)

## SALA GANDUL:

255m<sup>2</sup>  
Length: 20.50m  
Height: 4.67m  
Width: 12.45m  
Electricity: Schuko16A  
Aerial cable: Cetac 32A+63A

First floor with elevator.  
Natural light.





## SALAS ANDY WARHOL I PAULA ROSSELLÒ:

258 m2

Lenght: 20.44m

Andy Warhol: 20.44m2 Paula Rosselló: 17.62m2

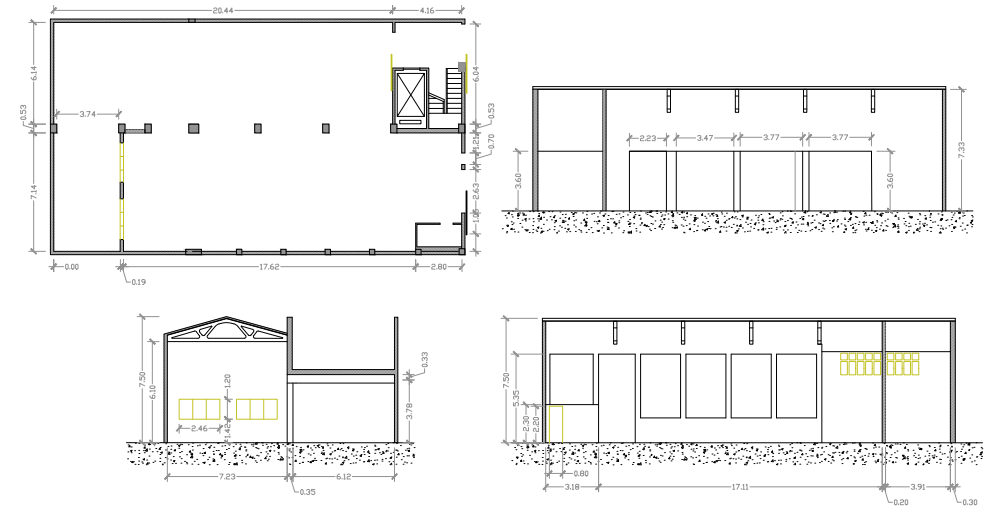
Height: 6.10m

Width: 13.81m

Electricity: SChuko 16A Cetac 32A+63A

3 inter-connected sets.

Another adjacent set, ideal for dressing room.



PROYECTO	
PLANO	Espai Andy Warhol i Paula Rosselló
ESCALA	1/150
FECHA	16/05/2017



## SALA 53:

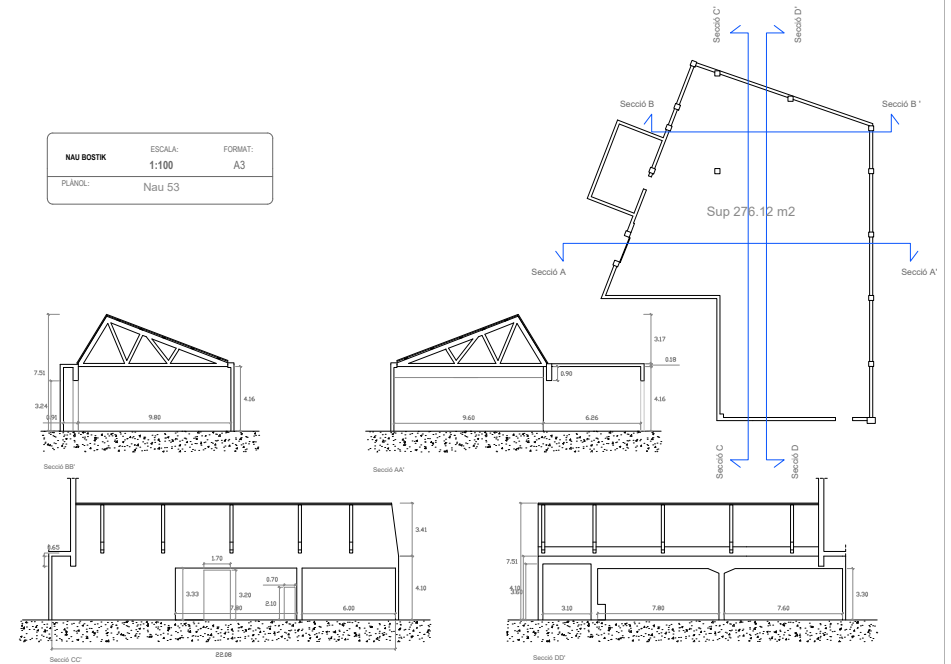
276.12m<sup>2</sup>

Length: 22.08m

Height: 4.16m

Width: 4.10m/3.41m

Electricity: Schuko 16A Cetac 32A+63A



## SALA JOAN PICANYOL:

189.04 m<sup>2</sup>

Length: 15.05m

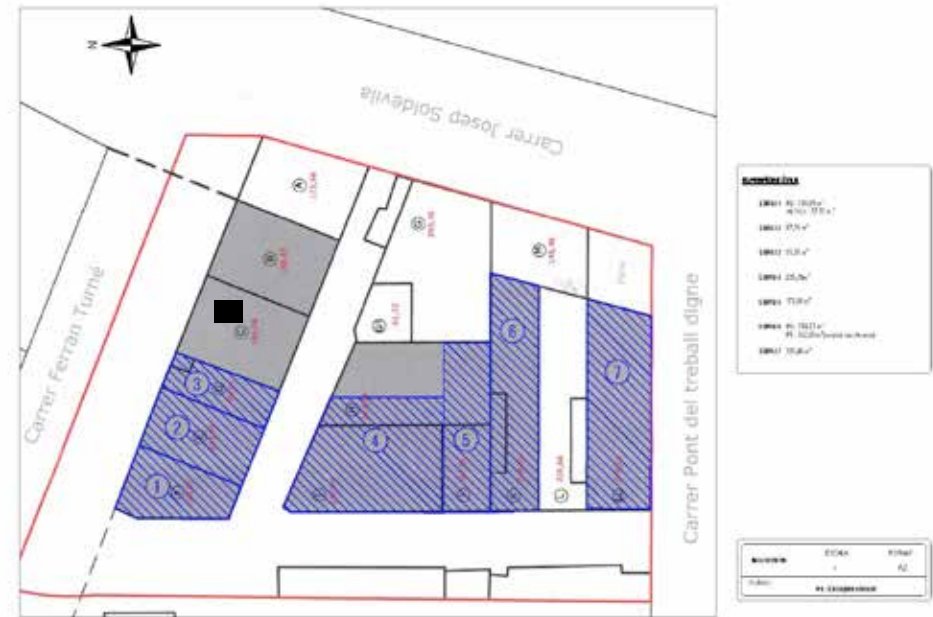
Height: 6m

Width: 6.26m

Electricity: Schuko 16A

Aerial cable: Cetac 32A+63A

■ Espai Joan Picanyol





## SALA PILAR VERS

295.39 m<sup>2</sup>

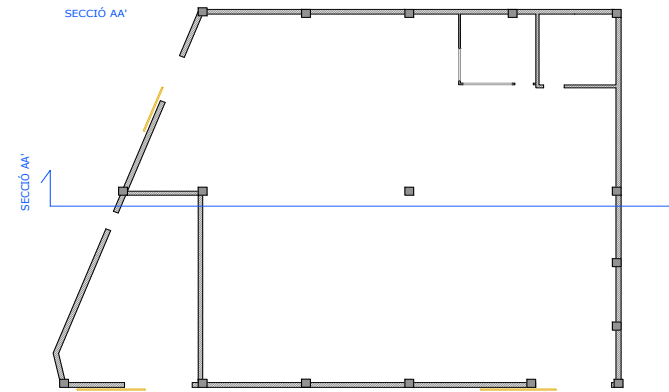
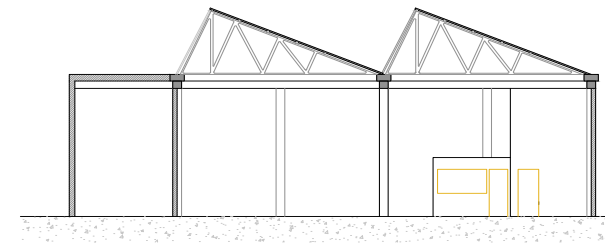
Length: 15.60m

Height: 5.20m

Width 15.30m

Electricity: Shuko 16A + Cetac 32A

Aerial cable: Cetac 63A



PROYECTO	
PLANO	Espai Pilar Vers i Josep Lluís Roig
ESCALA	1/100
FECHA	2/06/2017



## SALA NÚRIA HOSTA:

92.20m<sup>2</sup>

Length: 15.53m

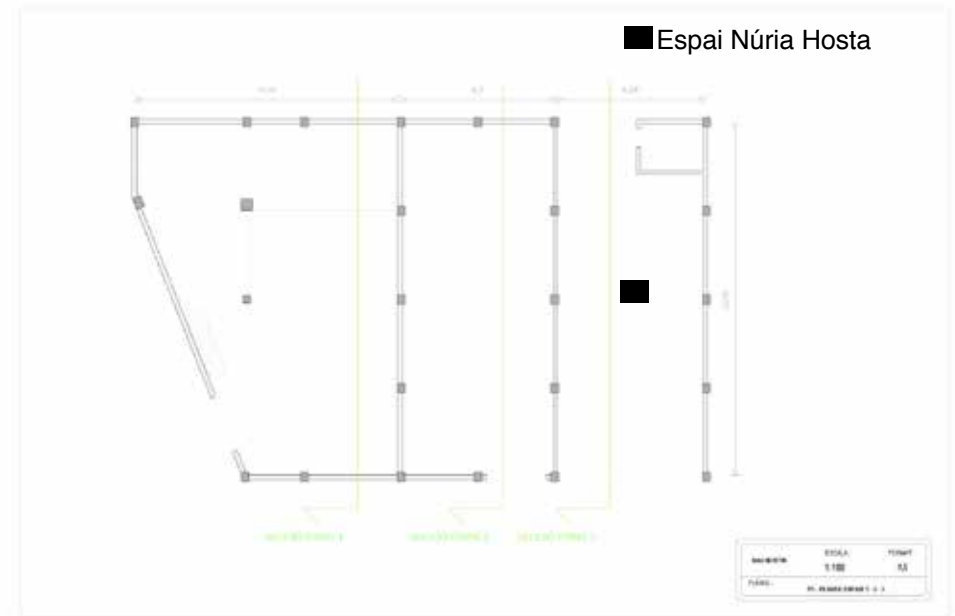
Height: 6m

Width: 6.29 m

Electricity: Schuko 16A

Aerial cable: Cetac 32A+63A

You can enter with the car.





## SALA POLANKIK:

138.89m<sup>2</sup>

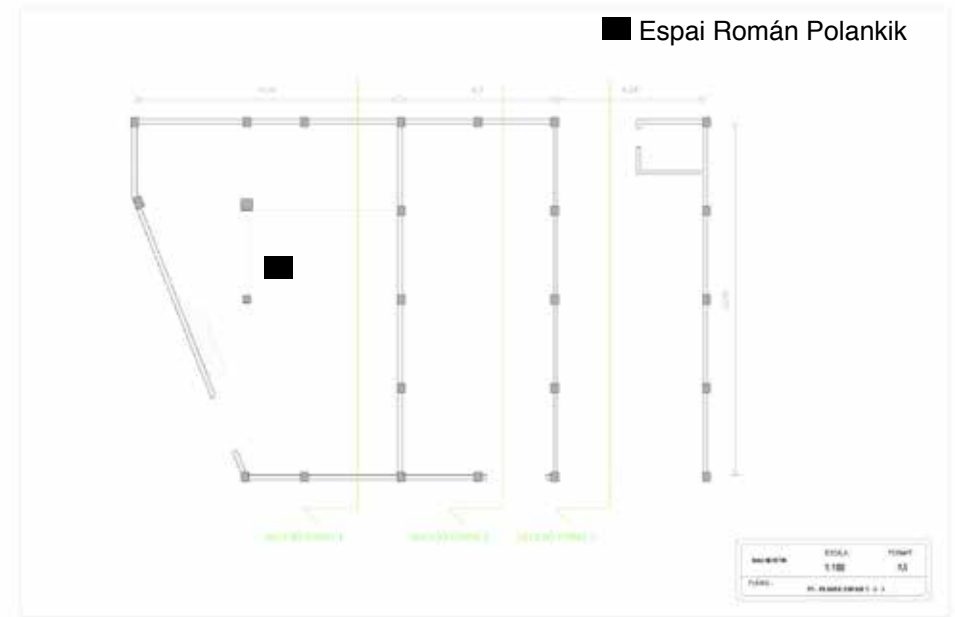
Length: 15.05m

Height: 6m

Width: 11.36m / 6.6m

Electricity: Schuko16A + Cetac 32A

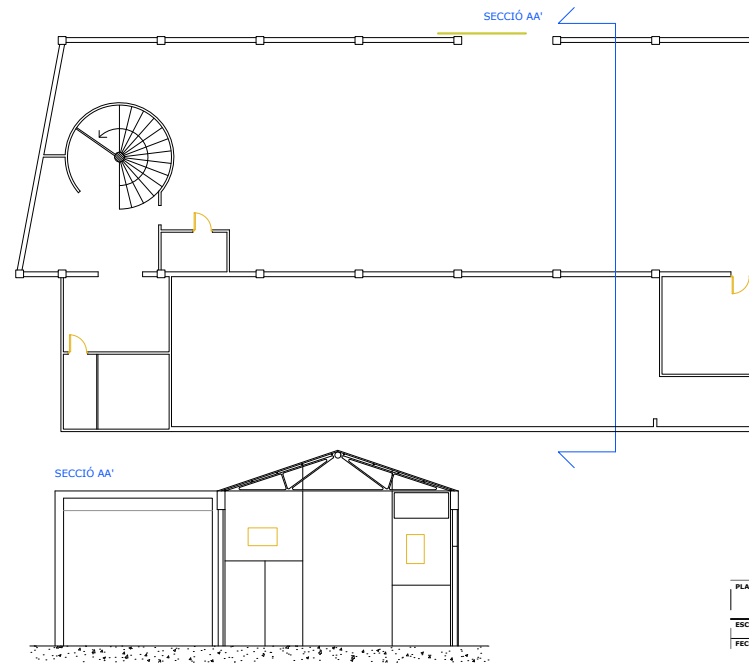
Aerial cable: Cetac 63A



**KM14:**

226 m<sup>2</sup>

Set with an industrial kitchen, ideal for catering.



PROYECTO	
PLANO	Espai km 14
ESCALA	1/100
FECHA	2/05/2017





## CUBICULE

4-cubicle set.

Industrial feeling.

Ideal for photo shootings and filming with specific needs.







## ADDITIONAL SETS

We have smaller sets for specific needs.  
Sets for customer meetings, viewings, production, dressing rooms...





## VIEWPOINTS

2 viewpoints with Barcelona's skyline.  
Looking into train rails.  
One of them completely open. The other has a roof.

